

## WINCHESTER ROAD, HIGHAMS PARK

£1,900 Per Month

3 Bed House - End Terrace



### Features:

- Highams Park Location
- Available Now
- Three Double Bedrooms
- Large Through Lounge
- First Floor Bathroom
- Ground Floor Shower Room & WC

Exceptional three bed, double bay fronted end of terrace Victorian family home. You've got a whole host of appealing features including large rooms, a ground floor shower room in addition to the first floor family bathroom and a huge through lounge. Located in a beautiful spot on the coveted Winchester Rd, moments from Highams Park station and walking distance to Epping Forest you are in the perfect spot here to enjoy those beautiful rural surroundings whilst being in the heart of the thriving Highams Park neighbourhood.

**E11, E7, E12 & E15**  
hello11@stowbrothers.com  
0203 397 2222

**E4 & N17**  
hello4@stowbrothers.com  
0203 369 6444

**E17 & E10**  
hello17@stowbrothers.com  
0203 397 9797

**E18 & IG8**  
hello18@stowbrothers.com  
0203 369 1818

**E8, E9, E5, N16, E3 & E2**  
hellohackney@stowbrothers.com  
0208 520 3077

**New Homes**  
newhomes@stowbrothers.com  
0203 325 7227

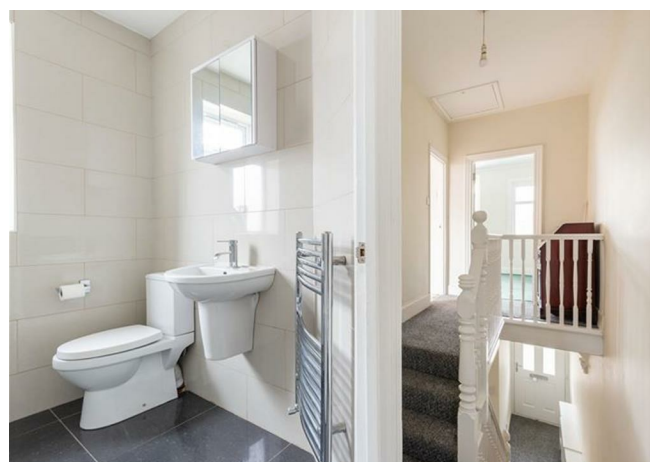
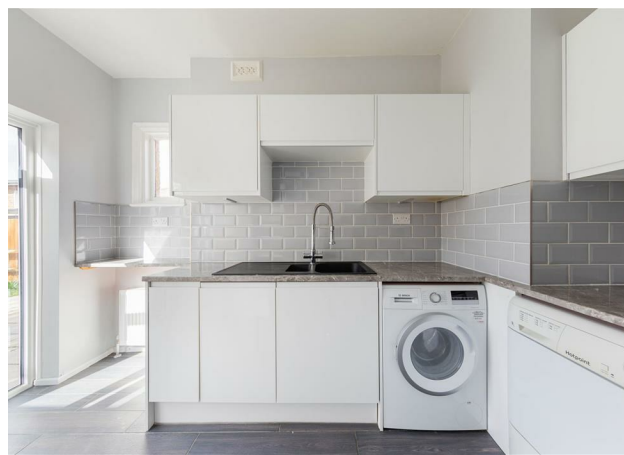
**Investment & Development**  
id@stowbrothers.com  
0208 520 6220

**Property Maintenance**  
propertymanagement@stowbrothers.com  
0203 325 7228

**STOWBROTHERS.COM**  
@STOWBROTHERS

REQUEST A VIEWING  
0203 369 6444





#### IF YOU LIVED HERE...

This is a large 1122 square feet family home and is bursting with original features you will enjoy admiring, including original ceiling roses, decorative coving and a marble surround fireplace. The decor throughout is pristine and neutral, with shining wooden flooring running underfoot in your large and airy through lounge. This is a great social space with a plethora of living space for all of your furniture configurations, including large sofas and a sizable dining table. Adjacent to the lounge is your ground floor shower room and WC. The kitchen sits to the rear, with double doors leading out to your large 14 metre garden. You will love spending time out here - with a paved area for bbq's and entertaining and a well established lawn it is West facing ensuring you can enjoy the long, sunny evenings with your favourite tippie.

Back inside, into your well appointed kitchen you've got stylish brick style splashback tiles, and a large integrated oven. Moving upstairs you've got three

large double bedrooms, the front bedroom is bright and lofty thanks to the large bay window and is roomy enough for a king size bed. You also have some super useful built in cupboards to satisfy your storage needs. The other two bedrooms are good sized doubles and you have the family bathroom up here.

Your location is perfect for commuters as you're a short 5 minute stroll from Highams Park station which provides a direct route into London Liverpool Street, or ride the two short stops to Walthamstow Central for the Victoria Line. As mentioned you are a short walk to picturesque Epping Forest, or follow the flowing River Ching that will lead you to Highams Park lake and playground. Stop for a steaming cup of coffee at local favourite Humphries Cafe, which doubles as a community and exhibition space with glorious view of wild flower meadows. For amenities you are steps away from the many restaurants that have helped cement Highams's Park reputation as a destination for food and drink. We recommend Yaz, a modern Mediterranean meets Middle Eastern restaurant serving delicious food in super cool surroundings.



#### WHAT ELSE?

- You are spoilt for choice with local pubs, we recommend the Stag and Lantern Micropub.
- Parents will be delighted by the many good local school options.
- Lea Valley offers acres of cycle paths for cyclists of all abilities to enjoy.

REQUEST A VIEWING  
0203 369 6444

FOLLOW US ➡ @STOWBROTHERS  
STOWBROTHERS.COM

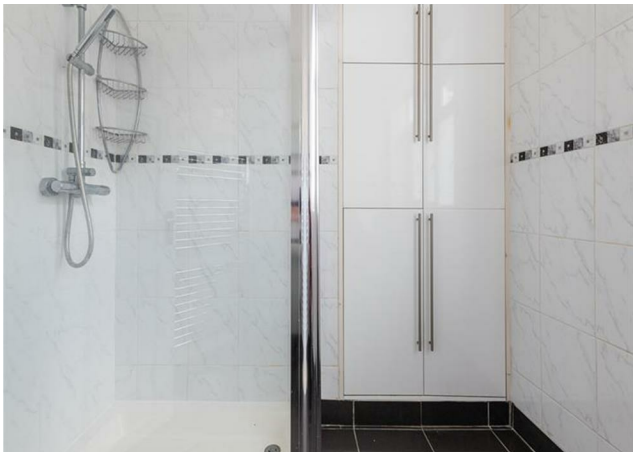




REQUEST A VIEWING  
0203 369 6444

FOLLOW US ➡ @STOWBROTHERS  
STOWBROTHERS.COM





**Reception Room**  
13'5" x 12'0"

**Reception Room**  
10'11" x 10'0"

**Shower Room**  
6'10" x 6'5"

**Kitchen**  
11'7" x 9'8"

**Bedroom**  
15'8" x 13'5"

**Bedroom**  
10'11" x 9'11"

**Bathroom**  
6'5" x 6'1"

**Bedroom**  
12'8" x 9'7"

**Garden**  
47'6"



REQUEST A VIEWING  
0203 369 6444

FOLLOW US ➡ @STOWBROTHERS  
STOWBROTHERS.COM